

The C Model air channel is a highly efficient aspiration system. The product, which cleans light grains, straws, shells, etc. when passing through the air suction channel, has a compact design with internal aspiration.

Product Inlet Valves

Air seal plates in the product inlet and outlet sections, which can be positioned automatically according to the flow volume.

Aspiration System

Dusty air drawn by suction is optionally sent to the cyclone or jet filter.

Product Flow Channel

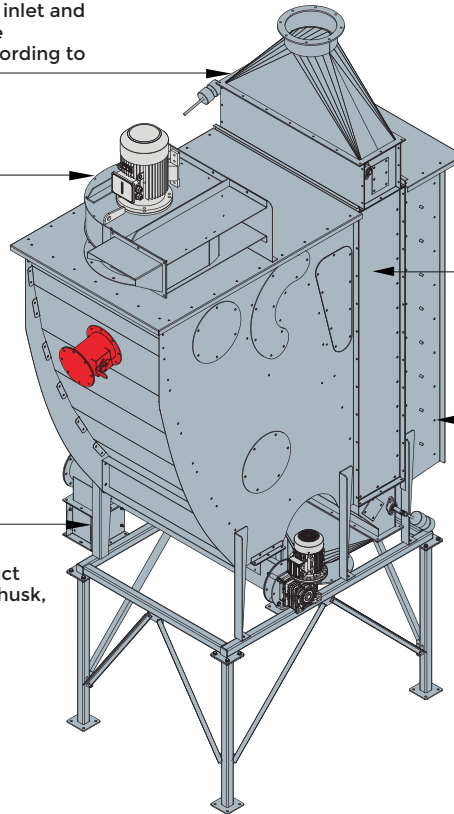
In the air channel, consisting of steps, the removal of the light matters in the product is smoothened.

Air Adjustment Valves

The air flow rate can be easily adjusted for products of different densities.

Waste Outlet

Discharging of non-product substances such as dust, husk, straw is carried out by an auger.



PRODUCT FEATURES

Eight-step column design is an efficient dust suction direction used to separate the light grain from the free-flowing product. While the product is loaded to the system, falls freely from the air channel steps, it offers the opportunity to operate efficiently in different types of products thanks to adjustable air inlet valves.

Light matters are drawn into the channel with the aspiration system are separated by waste auger that is in the channel. It can be used to separate the finer dusts by connecting cyclone or jet-pulse filter to the aspiration system.

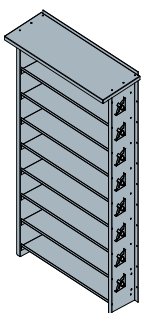
Removable acrylic windows provide visibility and easy cleaning. With the flow adjustment covers at the product inlet and discharge, the aspiration process is ensured to remain in the channel.

STANDARD EQUIPMENTS:

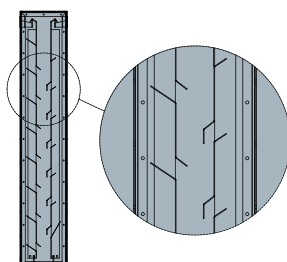
- Corrosion-resistant durable steel structure
- Aspiration system
- Waste unloading auger
- Access ladder

OPTIONAL EQUIPMENTS:

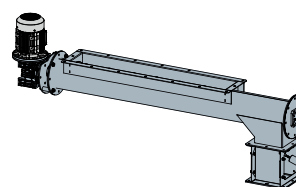
- ATEX equipment for explosive dusts
- Air Lock-
- Piping System
- Cyclone
- Jet-Pulse Filter



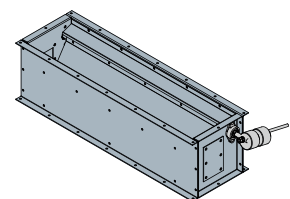
Air Adjustment Valve



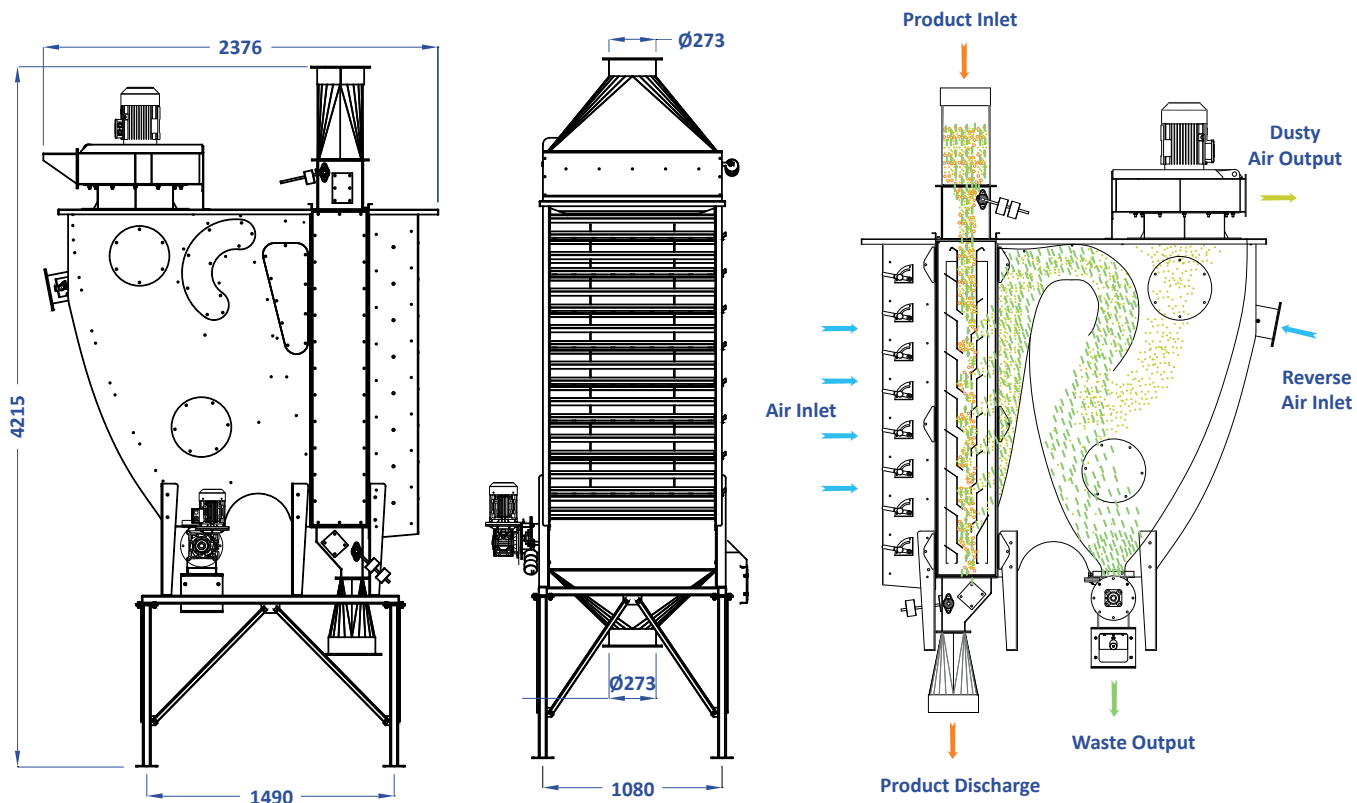
Product Flow Channel



Waste Unloading Auger
Cleaning System



Product Inlet Valve



Technical Specification

Brand	Mysilo
Model	C-C
Weight (kg)	960
Unloading Auger (kW)	0,75
Aspirator (kW - d/dk)	7,5 - 1.500
Air Tank (lt)	315
Width / Height / Length	1.100 / 4.250 / 2.400

Capacity Chart

Product	Wheat (Rough)	Wheat (Straw)	Wheat (Broken)	Barley (Rough)	Barley (Straw)	Barley (Broken)	Corn (Rough)	Corn (Straw)	Corn (Broken)	Paddy (Straw)	Rice (Straw)
Capacity*	48	26	16	38	20	12	44	16	14	20	26

- General dimensions.
- Mysilo has the right to change the technical specifications.

SPO.KTLG.23/00/21.12.2022-E