

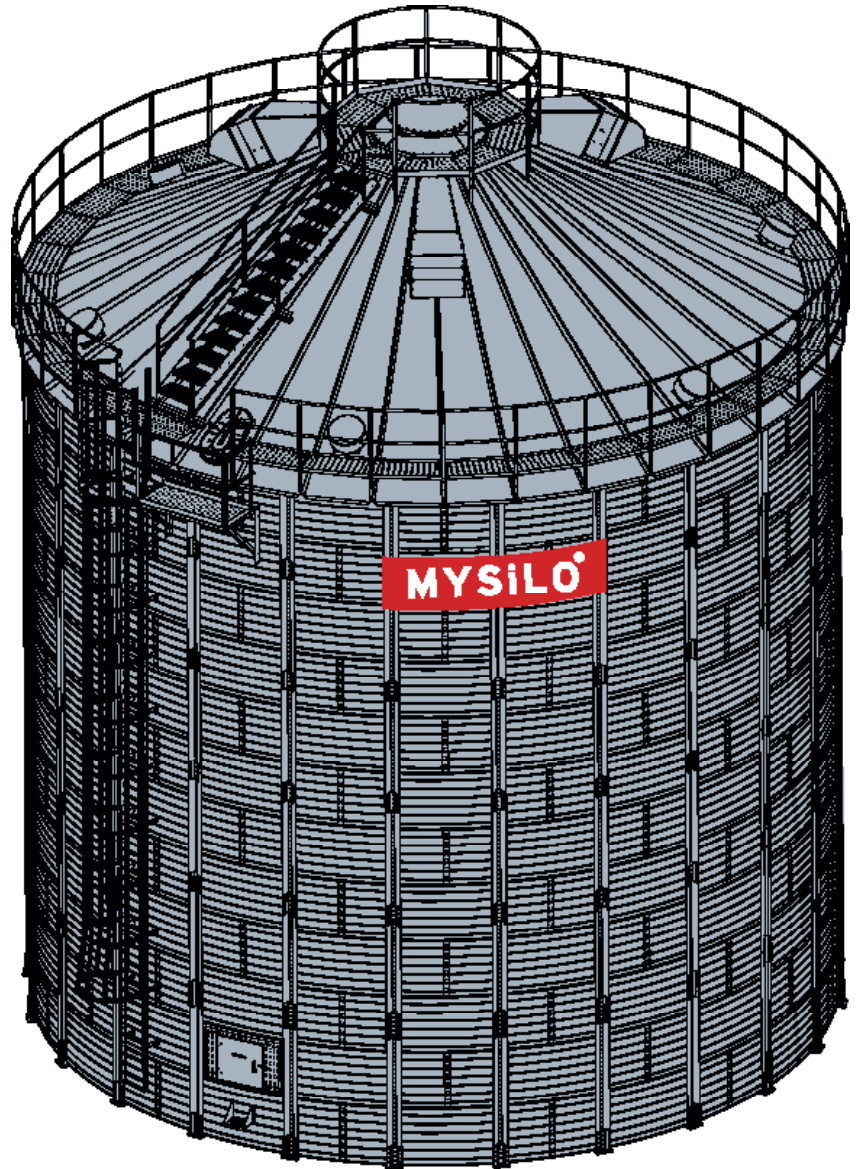
Our Flat Bottom F model silos have a capacity of 38.736 m³ in a range of 4.58 m to 41.25 m diameters and a maximum height of 40 rings.

The designs of our silos are made in accordance with the grain storage loads in ASABE 2008 EP433 standards. In addition to the silo design in accordance with the American (ASAE) norm as standard, silos in accordance with the DIN and EUROCODE norms are also designed as options.

In order to fulfil the requirements of our customers, the design of our silos can be made specifically for wind, snow and seismic loads according to the conditions of the region where they will be installed.

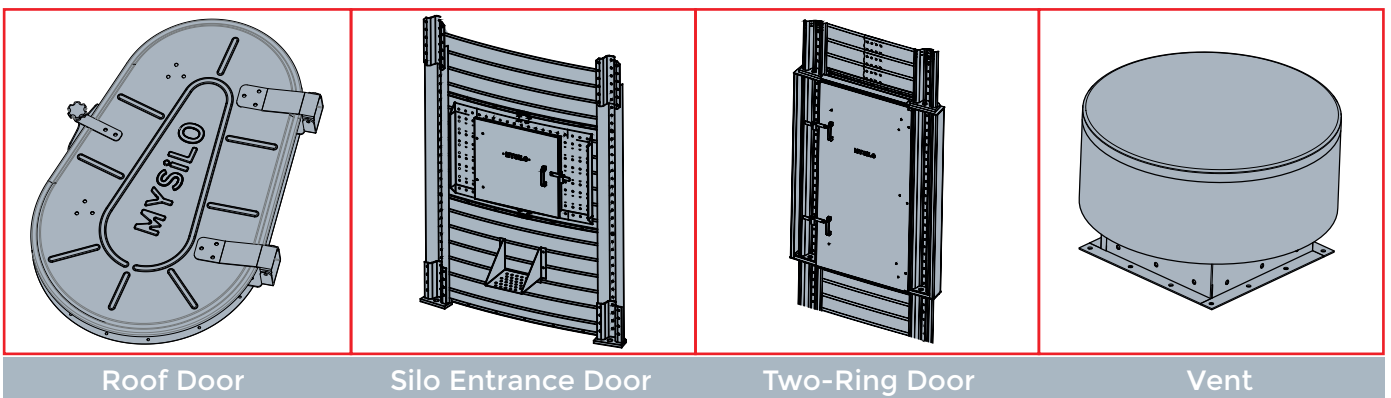
PRODUCT FEATURES

Silo walls, that are made of S350 quality galvanized sheet, are the narrowest corrugated sheets (65mm) and have stronger resistance. A total of 350 gr/m² and 600 gr/m² galvanized sheet is used on both surfaces for the exposure of humidity or natural events such as wind and sandstorm to which the area where the silo will be installed. With these features, it provides great advantage against its competitors.



OPTIONAL EQUIPMENTS:

- | | | | |
|-----------------------|-------------------------|---------------------------------------|---------------------------------|
| - Roof Ladder L Type | - Inside Ladder | - Aeration | - Level Sensor |
| - Roof Ladder LB Type | - Outer Ladder | - Vent | - Outer Ladder Safety Door |
| - Roof Ladder BB Type | - Spiral Stairs | - Exhaust Fan | - Occupational Safety Equipment |
| - Roof Eaves Platform | - Silo Door (I Model) | - Temperature Monitoring | |
| - Roof Eaves Railing | - Insulation | - Temperature and Moisture Monitoring | |
| - Roof Z-Ring Railing | - Ground Wall Anchorage | | |



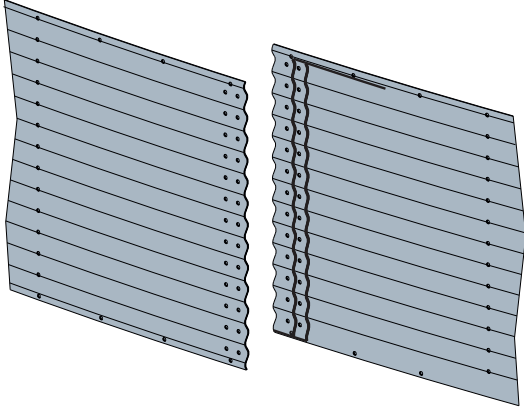
Roof Door

Silo Entrance Door

Two-Ring Door

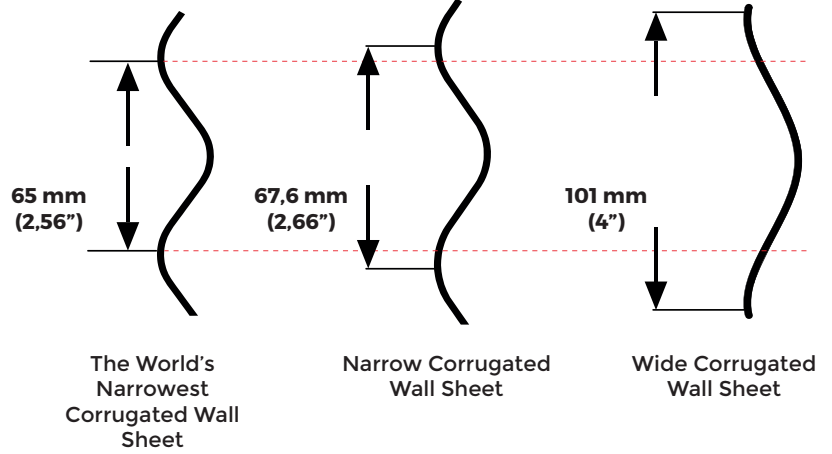
Vent

INSULATION



Heat and cold-resistant strip mastics, used in the joints of wall sheets, ensure perfect sealing in all types of climates.

WALL SHEET



The World's
Narrowest
Corrugated Wall
Sheet

Narrow Corrugated
Wall Sheet

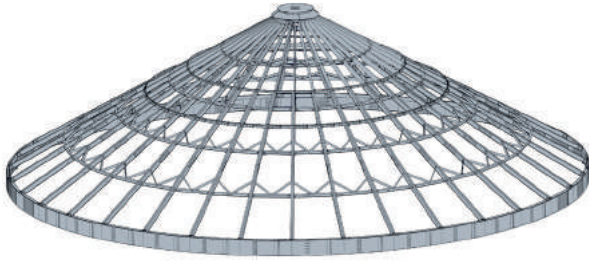
Wide Corrugated
Wall Sheet

MYSiLO®

**A Number of
Companies**

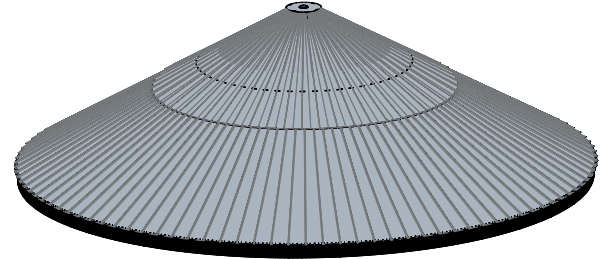
**A Lot Of
Companies**

ROOF



Roof beams designed from C profile have a higher load bearing capacity against their competitors.

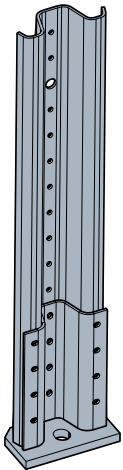
Special designs can be made according to different snow load and peak load requirements.



The overlapping trapezoid pitch of the roof panels is designed at a depth of 75 mm with 7 bends. It has a stronger structure than its precedents.

Mysilo provides a great advantage in terms of ease of installation by using 3 roof panels on each wall sheet.

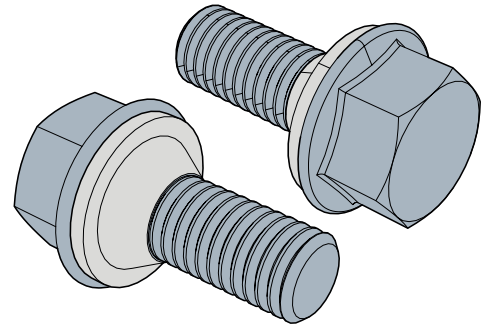
STIFFENER



This part, which is used in the connection of the columns to the ground, provides ease of assembly.

Stiffeners have higher load bearing strength owing to their special designs with 6 bends.

FASTENERS



10.9 quality bolts, that are tested with at least 600 hours salt test, are used in order to ensure maximum durability at all joints of silo wall sheets and stiffeners.

Thanks to the high density conical polyethylene seals in our bolts, the sealing is kept at the highest level.