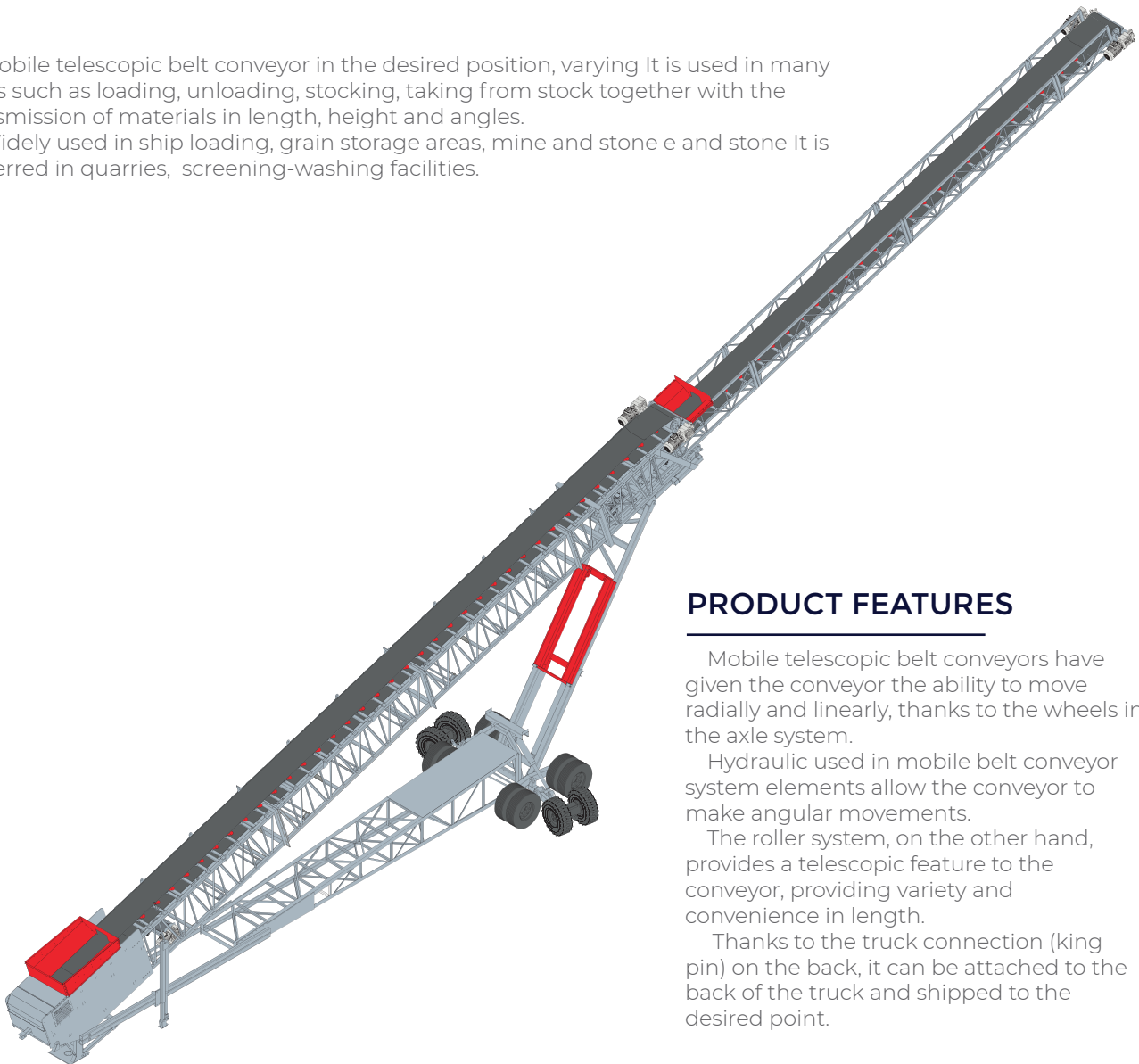


Mobile telescopic belt conveyor in the desired position, varying It is used in many areas such as loading, unloading, stocking, taking from stock together with the transmission of materials in length, height and angles.

Widely used in ship loading, grain storage areas, mine and stone e and stone It is preferred in quarries, screening-washing facilities.



PRODUCT FEATURES

Mobile telescopic belt conveyors have given the conveyor the ability to move radially and linearly, thanks to the wheels in the axle system.

Hydraulic used in mobile belt conveyor system elements allow the conveyor to make angular movements.

The roller system, on the other hand, provides a telescopic feature to the conveyor, providing variety and convenience in length.

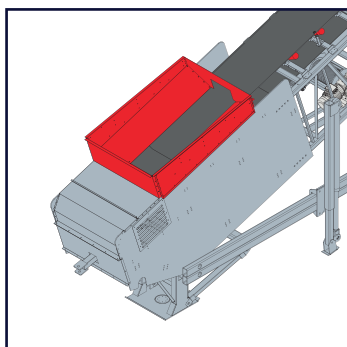
Thanks to the truck connection (king pin) on the back, it can be attached to the back of the truck and shipped to the desired point.

STANDARD EQUIPMENT:

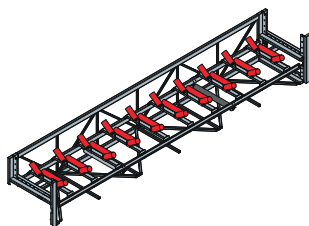
- Coupled Motor Reducer
- Anti Static Rubber Band
- Inlet and Discharge Chamber
- Dustproof Felt
- Belt Tensioning Mechanism
- Wanderer
- Drive Drum Rubber Coating

OPTIONAL EQUIPMENT:

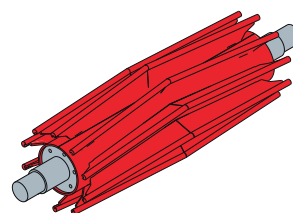
- Impact Disc Conveyor Rollers
- Helical Belt Cleaning Rolls
- Pouring Chamber - Polyethylene Coating
- Speed Sensor
- Top Closing
- 360° Rotating Pouring Chamber



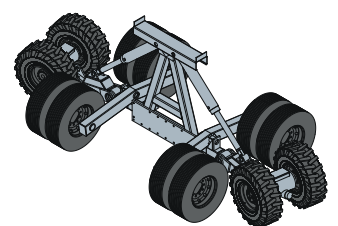
Inlet Chamber



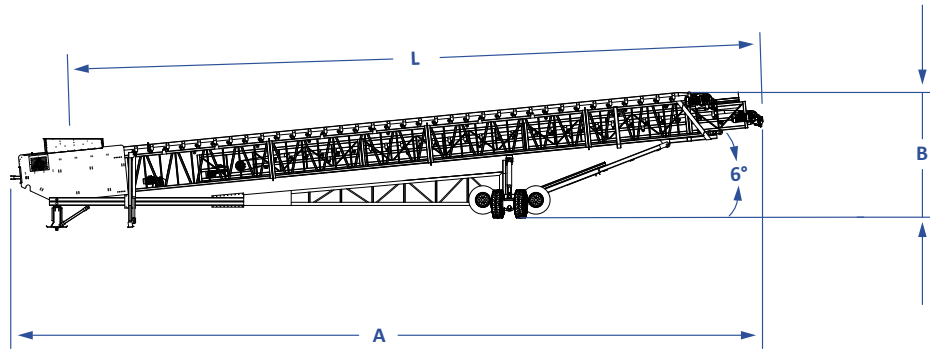
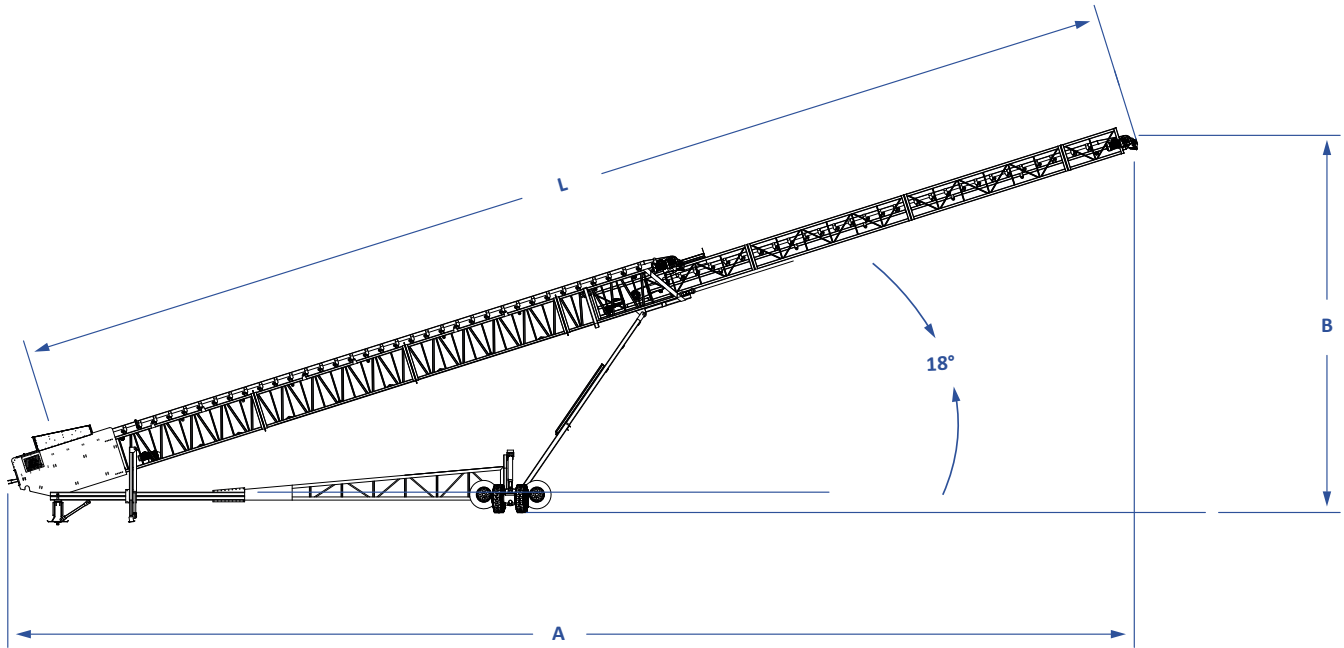
Roll



Idler Drum



Axle Chassis



Dimension Chart

Model	Angle (°)	Min A	Max A	Min B	Max B	Min L	Max L
BC-MT-0842	6°	28.500	44.200	4.700	5.000	26.200	42.000
	18°	27.500	42.600	8.600	14.200	26.200	42.000

Technical Chart

Belt Width	Unit	Belt Speed		
		1,5	2	2,5
800	m³/s	260	325	390

- Dimensions are given as mm.
- Product density for capacity calculation is calculated as 769 kg/m³.
- The data on the chart are approximate values.
- Maxporter has the right to change the technical specifications.