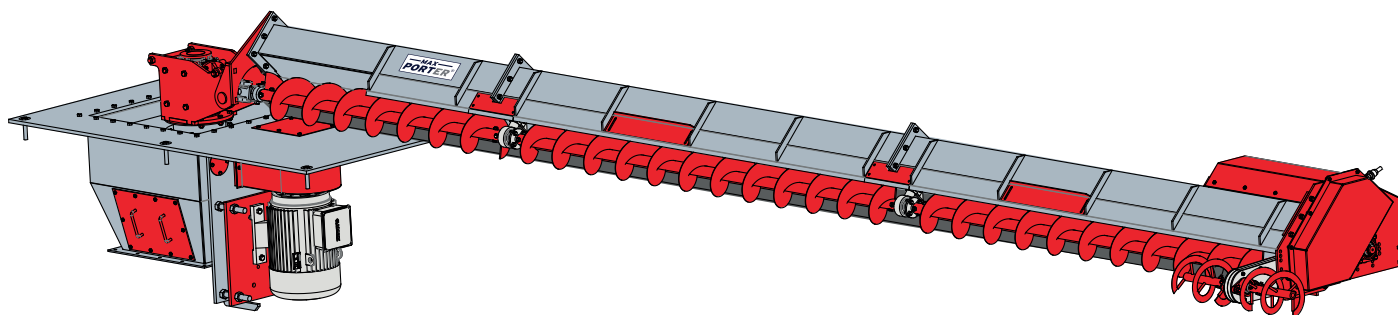


AE model sweep augers allow the grain, which cannot be emptied with free flow in the silo, to be sent to the center well and emptied by the return of the augers. The motor is in the tunnel. The motor section can be intervened through the tunnel. Since there is no motor in the silo, the risk of dust explosion is minimized. It has CE certificates.



## PRODUCT FEATURES

Our Maxporter brand AE model sweep augers have a reinforced shield structure. Our Y-model drives have a special operating principle with an eccentric spring. No electric motor is used on the drive. ,

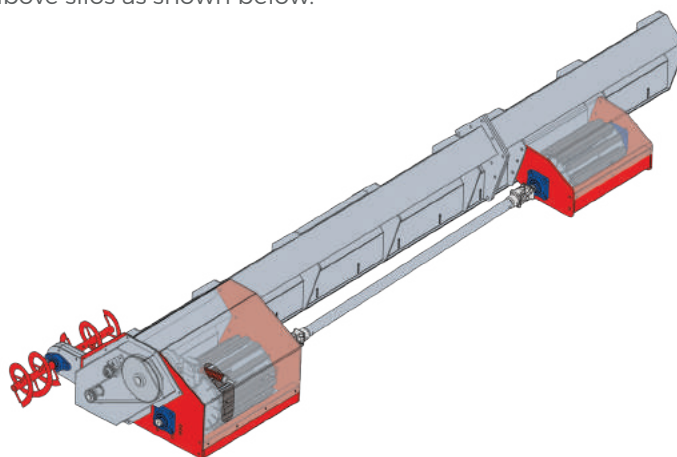
The motion is transmitted from the motor to the reducer and flights by belt-pulley. It takes its motion from the auger shaft.

### STANDARD EQUIPMENTS:

- Motor Section Unit
- Shields
- Augers
- Y Model Drive
- Control Pane

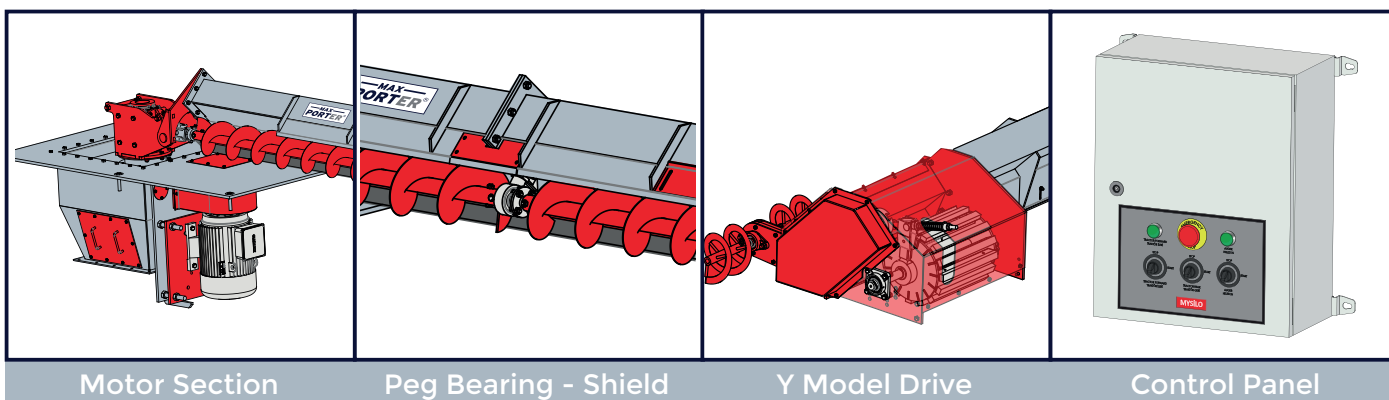
### SUPPORT DRIVE:

Additional support drive is used as standard in 22 model and above silos as shown below.



### OPTIONAL EQUIPMENTS:

- Edge Support Auger
- Control Panel with Inverter
- Clogging Sensor
- Parking Sensor

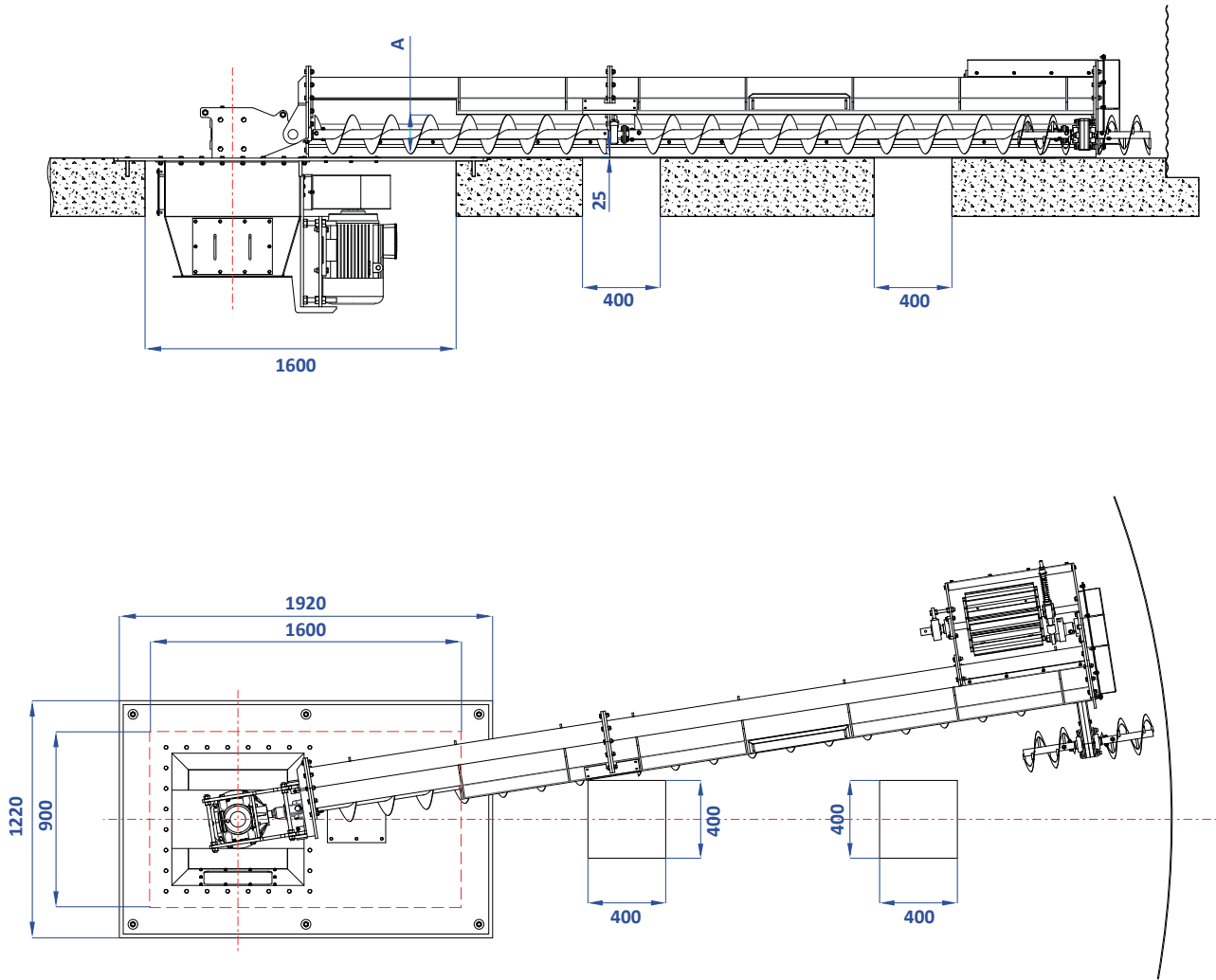


Motor Section

Peg Bearing - Shield

Y Model Drive

Control Panel



A : Auger Diameter  
XX : Silo Model

### Capacity Chart

Model	A (mm)	t/h	m <sup>3</sup> /h	Rotation (rpm)
AE-200XX	Ø200	75	100	325
AE-300XX	Ø300	225	300	325
AE-200XX.216	Ø200	50	66	216
AE-300XX.216	Ø300	150	200	216

\* Density was considered according to wheat 0,75 t / m<sup>3</sup>.

\* Capacity values are maximum values.

\* Maxporter has the right to change technical specifications