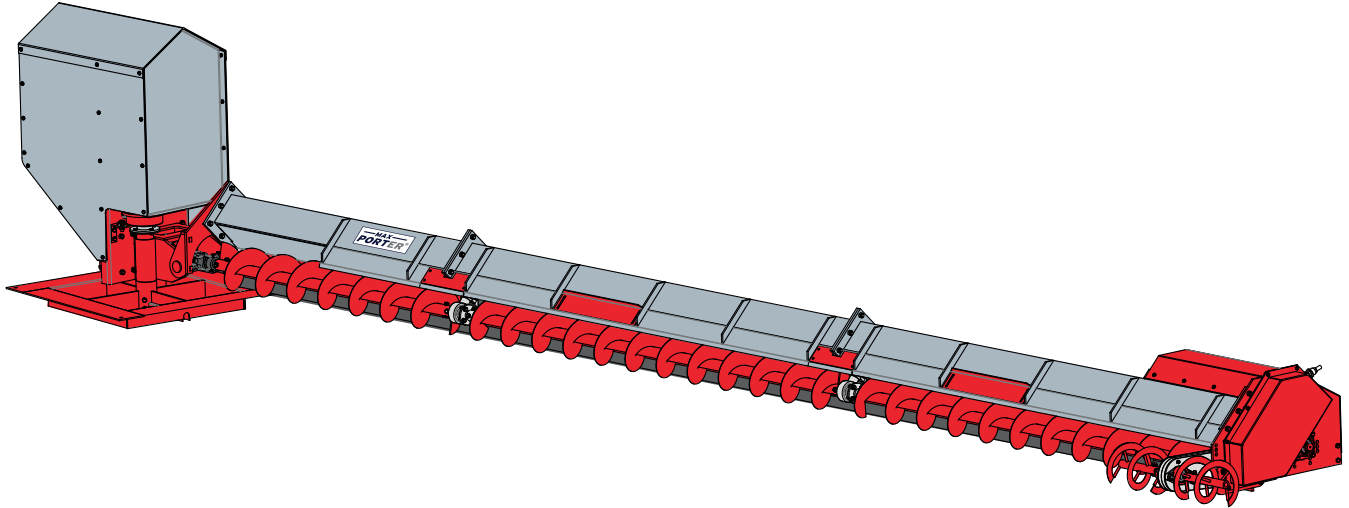


UE model sweep augers allow the grain, which cannot be emptied with free flow in the silo, to be sent to the center well and emptied by the return of the augers. It has CE certificates.



## PRODUCT FEATURES

Our Maxporter brand AE model sweep augers have a reinforced shield structure. Our Y-model drives have a special operating principle with an eccentric spring. No electric motor is used on the drive.

The motion is transmitted from the coupled motor to the reducer and flights.

### STANDARD EQUIPMENTS:

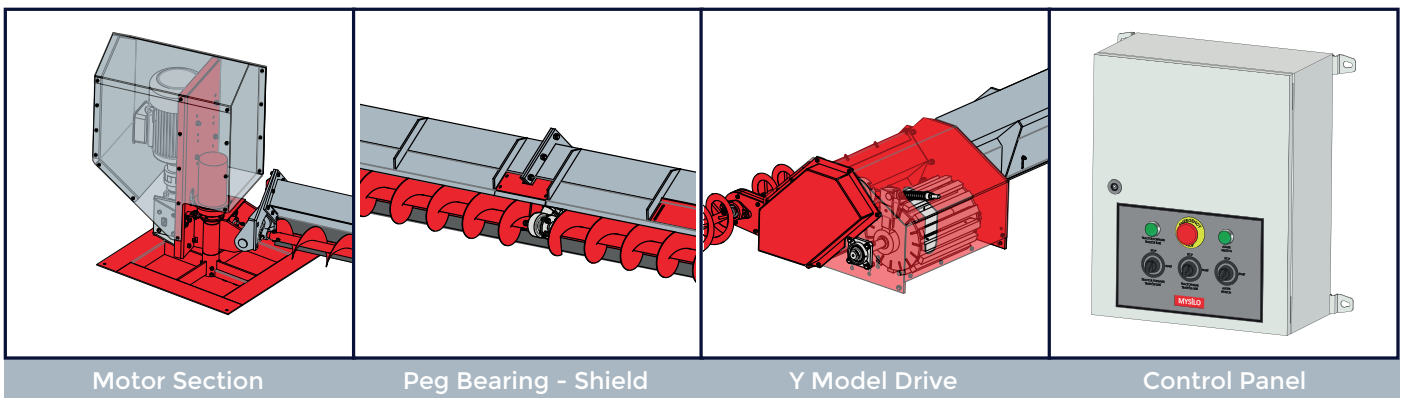
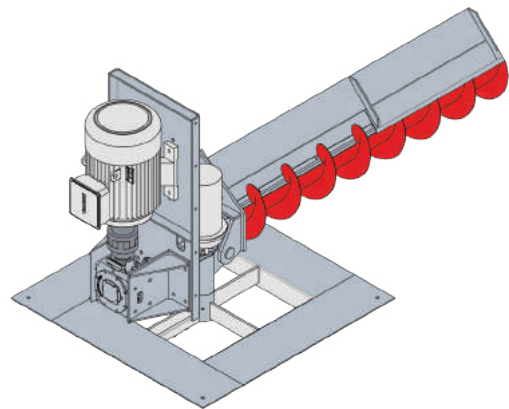
- Motor Section Unit
- Shields
- Augers
- Y Model Drive
- Control Panel

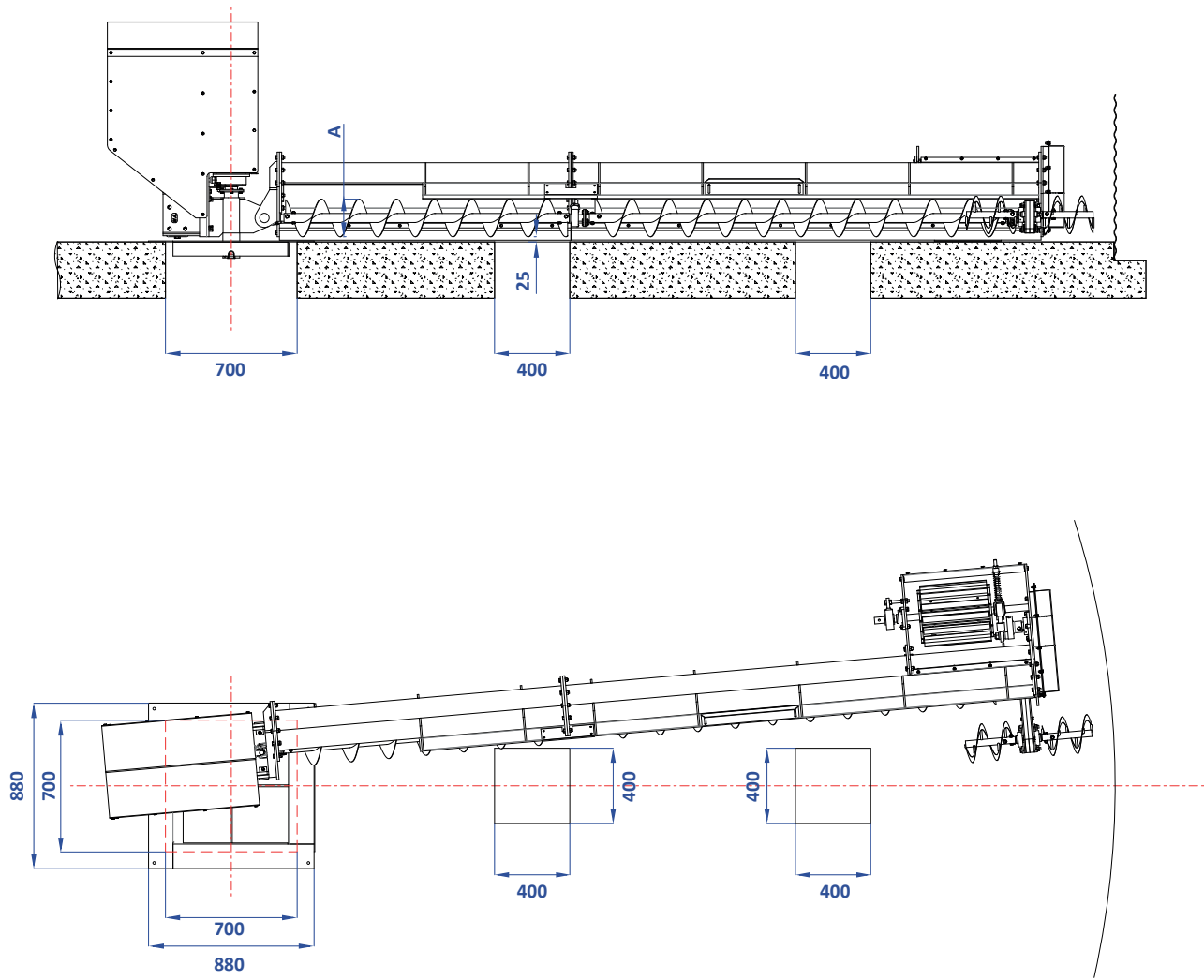
### COLLECTOR:

For electrical cable connections, it is used to prevent the cables from bending while the sweep auger is rotating around its own axis.

### OPTIONAL EQUIPMENTS::

- Edge Support Auger
- Control Panel with Inverter
- Clogging Sensor
- Parking Sensor





A : Auger Diameter

XX : Silo Model

### Capacity Chart

Model	A (mm)	t/h	m <sup>3</sup> /h	Rotation (rpm)
UE-200XX	Ø200	75	100	325
UE-300XX	Ø300	225	300	325
UE-200XX.216	Ø200	50	66	216
UE-300XX.216	Ø300	150	200	216

\* Density was considered according to wheat 0,75 t /m<sup>3</sup>.

\* Capacity values are maximum values.

\* Maxporter has the right to change technical specifications