

R SERIES BELT CONVEYOR MEASUREMENTS

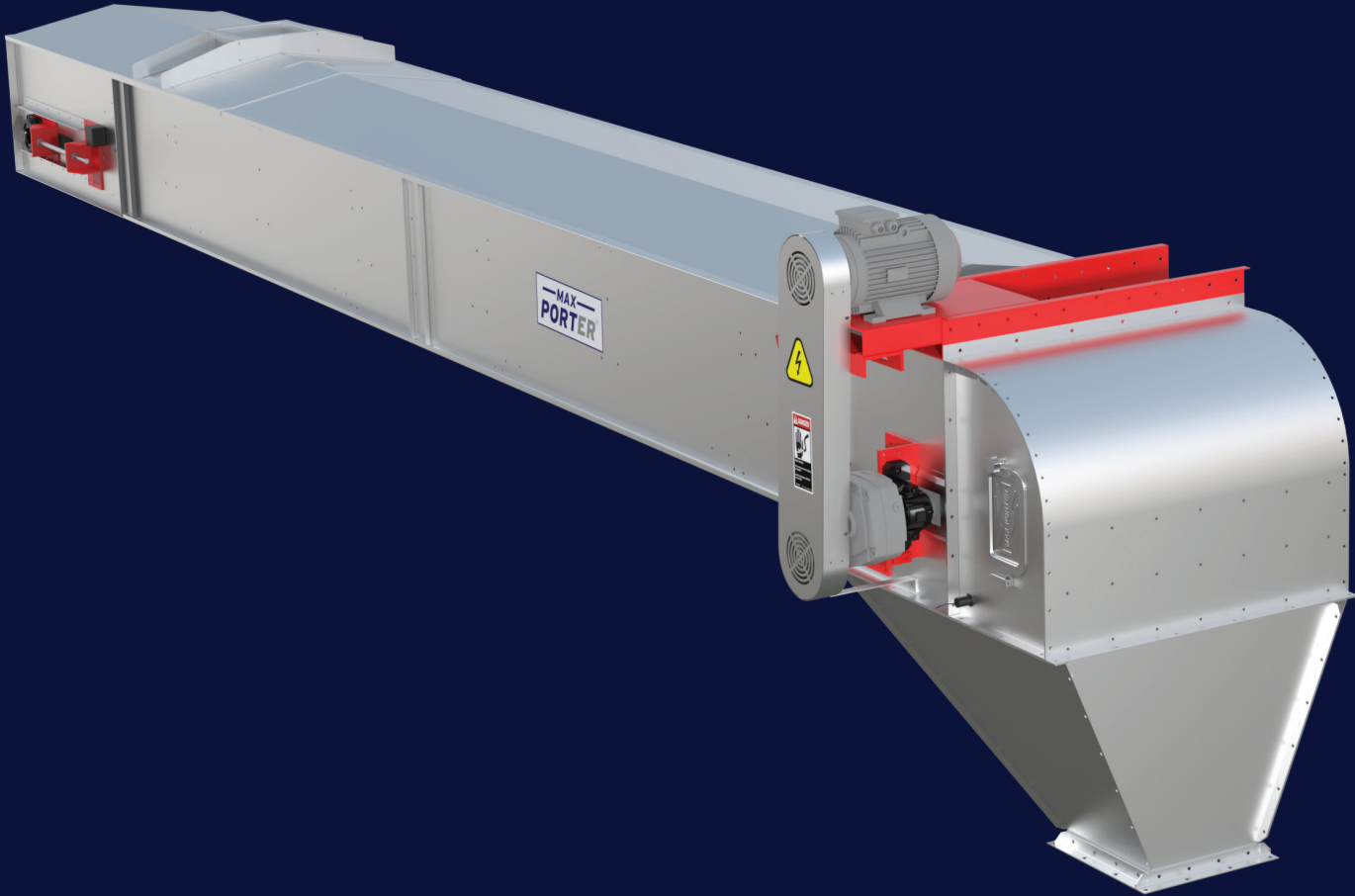
MODEL	A	B	C	D
BKR - 50	700	480	1050	3000
BKR - 60	800	490	1050	3000
BKR - 70	950	575	1200	3000
BKR - 80	1110	740	1200	3000
BKR - 100	1350	1105	1600	6000
BKR - 120	1600	1230	1600	6000
BKR - 140	1800	1330	1600	6000

R SERIES BELT CONVEYOR CAPACITY CHART

MODEL	BELT WIDTH (mm)	CARRIER ROLE	ROLE ANGLE (mm)	UNIT	BELT SPEED (m / sn)				
					1	1,5	2	2,5	3
BKR - 50	500	2	20°	t/h	40	60	80	-	-
				m³/h	52	78	104	-	-
BKR - 60	600	2	20°	t/h	70	105	140	-	-
				m³/h	91	137	182	-	-
BKR - 70	700	3	35°	t/h	110	165	220	-	-
				m³/h	143	215	286	-	-
BKR - 80	800	3	35°	t/h	-	200	250	300	-
				m³/h	-	260	250	390	-
BKR - 100	1000	3	45°	t/h	-	-	400	500	600
				m³/h	-	-	520	650	780
BKR - 120	1200	3	45°	t/h	-	-	600	800	1000
				m³/h	-	-	780	1040	1300
BKR - 140	1400	3	45°	t/h	-	-	900	1100	1300
				m³/h	-	-	1170	1430	1691

* Measurement in mm.
* The product Density m³/s.
* The values in the table are approximate.
* The product density is considered for to be 769 kg/m³ metric ton calculation.
* Maxporter has the right to change specifications.

R SERIES BELT CONVEYOR



R SERİSİ BANT KONVEYÖR

Maxporter R Series Belt Conveyors provides low energy consumption due to carrier rollers. It is a model preferred in high carrying capacities and long distances. It is covered and suitable for working in outdoor conditions. It is manufactured from galvanized steel. In this way, it is long-lasting against environmental factors. Our belts with anti-static properties are resistant to fire risks of dust explosion. Our R Series Belt Conveyors are preferred when products such as seeds, nuts, legumes are not desired to be mixed during the transport, packaging and storage. It prevents breaking, crushing and deformation in the transported products. Our Maxporter Belt Conveyors are environmentally friendly and comply with occupational health and safety regulations. It has CE certification.

