

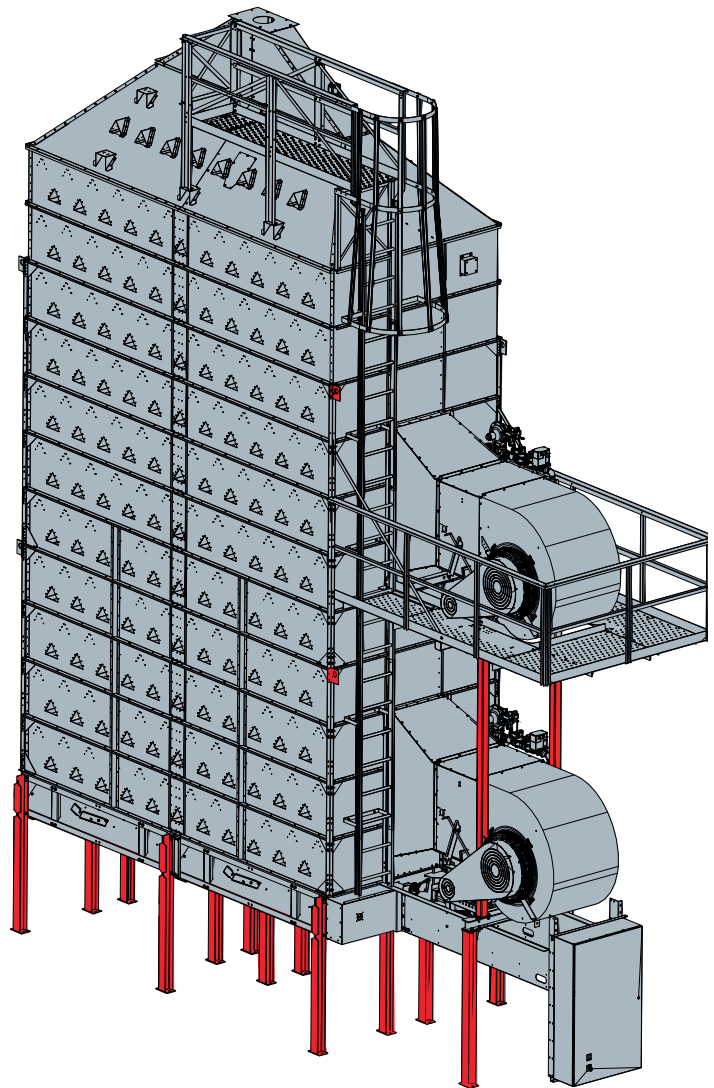
Mxflow E series dryers represent a new era in drying technology on account of their unique design and flexible structure. Owing to its multi-burner structure, drying is provided in the most suitable environment for grains. By closing the desired floor and putting it into use, the grain can be rested even in the process and all the tension that may occur on it can be eliminated. This ensures that the product dries with the least damage.

PRODUCT FEATURES

It applies the mixed drying method, which is the most efficient drying method, by drying with the air flow perpendicular to the flow direction of the grain. It has a structure suitable for continuous drying. It provides drying opportunity even if the product to be dried does not fill the entire machine.

Due to the high air velocity, large capacities are obtained in small volumes. Using forward curved silent centrifugal fans, high flow low cost airflow is achieved. Because of the triangular channels, the product is distributed evenly in the machine. The grain columns extend along the length of the machine to provide drying in maximum area and volume. The equipment used is of high quality and long-lasting. The burner computer keeps the continuity of the combustion under control by constantly checking the air flow, temperature and the presence of the flame. The desired section can be set as full heating or full cooling. This structure constitutes the top model of the market in terms of flexibility. Many different types of products can be dried in the same dryer.

Due to its design feature, the number of floors and capacity can be increased in the future.

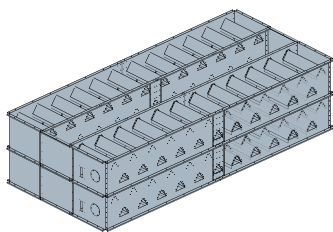


STANDARD EQUIPMENTS:

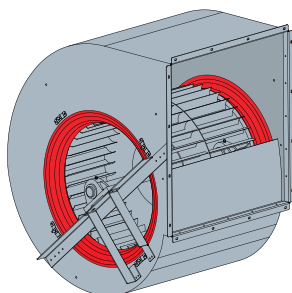
- Unloading System Drive Mechanism
- Forward Curved Fans
- Hot Air Distribution Section
- Dryer Loading Chamber Inlet
- Grain Holding and Distribution Section
- Grain Drying Columns
- PLC Control Panel
- Access Stairs and Platforms

OPTIONAL EQUIPMENTS:

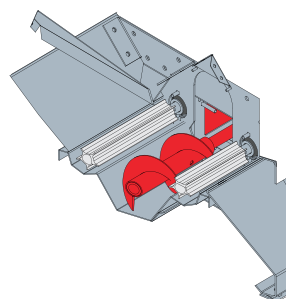
- Motor Upgrade Option
- Chain Conveyor Unloading System
- Husk Collection System
- Upper Level Auge



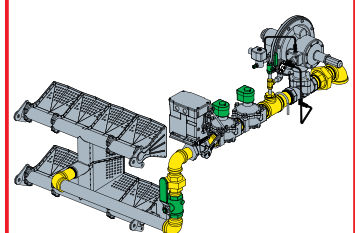
Grain Columns



Forward Curved Fan



Product Discharge
Dosed Discharge



Combustion
/ Combustor System

Capacity Chart

Models	Amount of Floors	Column Length (m)	Loading Capacity (m³)	Loading Capacity (MT)	Corn Drying %5 (22-17%) Heating 99 C°	Corn Drying %10 (27-17%) Heating 99 C°	Corn Drying %5 (20-15%) Heating 99 C°	Corn Drying %10 (25-15%) Heating 99 C°	Total Aeration Amount (m³ / min)	Total Power of Fans (kW)	Discharge Motor Power (kW)	Level Auger Height (m)	Self Loading Height (m)	Total Length	Width
GD-E3617	4	3,6	17	10,80	10,0	5	6,0	3,0	410	11,2	1,1	4,63	4,88	6,10	2,35
GD-E3618	5	3,6	18	12,60	11,5	6	8,0	4,0	470	11,2	1,1	5,24	5,49	6,10	2,35
GD-E3620	6	3,6	20	14,50	13,5	7	11,0	5,0	550	11,2	1,1	5,85	6,10	6,10	2,35
GD-E4824	5	4,8	24	17,00	15,0	8	11,3		650	14,9	5,5	5,24	5,87	7,32	2,35
GD-E4827	6	4,8	27	19,50	18,0	9	14,0	7,5	750	14,9	5,5	5,85	6,48	7,32	2,35
GD-E4830	7	4,8	30	21,80	21,0	11	17,0	9,0	900	18,7	5,5	6,46	7,09	7,32	2,35
GD-E4834	8	4,8	34	24,25	24,0	13	21,0	11,0	1.000	22,4	5,5	7,07	7,70	7,32	2,35
GD-E4841	10	4,8	41	29,15	31,0	16	28,0	15,0	1.300	29,9	5,5	8,29	8,92	8,23	2,35
GD-E4847	12	4,8	47	34,21	35,0	19	32,0	17,0	1.550	29,9	5,5	9,51	10,13	8,23	2,35
GD-E4854	14	4,8	54	39,00	42,3	23	38,0	20,0	1.850	41,1	5,5	10,73	11,35	8,23	2,35
GD-E4861	16	4,8	61	44,00	48,0	26	45,0	24,0	2.200	48,5	5,5	11,95	12,56	8,23	2,35
GD-E4868	18	4,8	68	48,75	55,0	29	50,0	27,0	2.330	56,0	5,5	13,17	13,78	8,23	2,35
GD-E7341	6	7,3	41	29,25	27,0	14	21,0	11,0	1.160	22,4	7,5	5,85	7,29	10,67	2,35
GD-E7351	8	7,3	51	36,50	36,0	19	31,0	16,0	1.550	29,9	7,5	7,07	8,51	10,67	2,35
GD-E7361	10	7,3	61	43,75	41,5	22	38,0	20,0	1.750	37,3	7,5	8,29	9,73	10,67	2,35
GD-E7372	12	7,3	72	51,25	54,0	29	47,0	24,5	2.300	44,8	7,5	9,51	10,95	10,67	2,35
GD-E7381	14	7,3	81	58,50	58,0	32	54,0	28,0	2.354	52,3	7,5	10,73	12,17	10,67	2,35
GD-E7391	16	7,3	91	66,00	71,0	39	67,0	35,0	3.110	59,7	7,5	11,95	13,39	10,67	2,35
GD-E73112	20	7,3	112	80,50	90,0	49	85,0	45,0	3.850	74,7	7,5	14,39	15,82	10,67	2,35
GD-E73132	24	7,3	132	95,00	105,0	58	104,0	56,0	4.650	89,6	7,5	16,82	18,26	10,67	2,35
GD-E9895	12	9,8	95	68,00	70,0	38	62,0	32,0	3.000	67,2	11,0	9,51	11,77	13,11	2,35
GD-E98122	16	9,8	122	87,50	95,0	51	88,0	46,0	4.050	89,6	11,0	11,95	14,20	13,11	2,35
GD-E98149	20	9,8	149	107,00	116,0	64	112,0	60,0	5.130	104,5	11,0	14,39	16,64	13,11	2,35
GD-E98176	24	9,8	176	127,00	142,0	77	136,0	73,0	6.100	134,4	11,0	16,82	19,08	13,11	2,35

- Capacities are calculated according to (769kg/m³) product density.
- All values given are predictions obtained by MYSiLO from the combination of field experiences and computer analysis. Field results may vary according to conditions of; temperature and humidity, grain inlet temperature, grain (seed) maturity and variety, grain cleanliness, test weight, drying operating temperature, drying and cooling zones and number etc.
- MXFLOW Dryers have 3 different fuel type options as **LNG, LPG and DIESEL**.
- MYSiLO reserves the right to change the technical specifications.

SPO.KTLG.27/00/21.12.2022-E