

The towers are designed to provide support for elevators and also to intervene during maintenance of elevators and conveyors. The dimensions of the elevator tower vary according to the requirement.

PRODUCT FEATURES

Coating

Painted (RAL-7035 light gray) &
Hot Dip Galvanized EN ISO 1461

Paint

Epoxy Primer (Ral 7650) + Acrylic Top Coat (Ral 7035) (Min 80 µm)
Hot Dip Galvanized EN ISO 1461"

Material and Section Specifications

Sections

Column Sections: Box Profile

Horizontal and Cross Sections: Box and Bracket Profile

Material Quality

Profile and Plate Materials: S235JR

Column and Beam Materials: S235JR, S275JR

Bolt Quality

8.8"

Snow Load

75 kg/m²

Wind Load

145 km/h

Design Standards

TBDY 2018 (Turkish Building Earthquake Regulation)

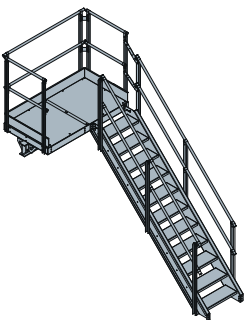
TS 498 (Design loads for sizing structural members)

Design, Analysis, and Construction Principles of Steel Structures (AISC-360-10)

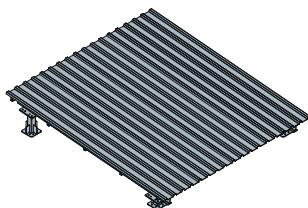
ÇYTHYE-2018: Design, Analysis, and Construction Principles of Steel Structures

TS EN 1991-1-3 Eurocode 1: Snow loads

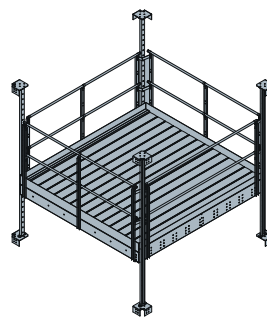
TS EN 1991-1-4 Eurocode 1: Wind loads"



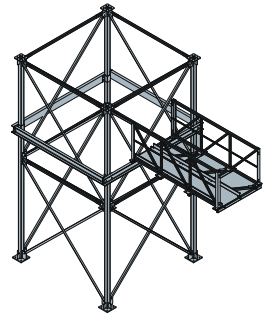
Spiral Stairs



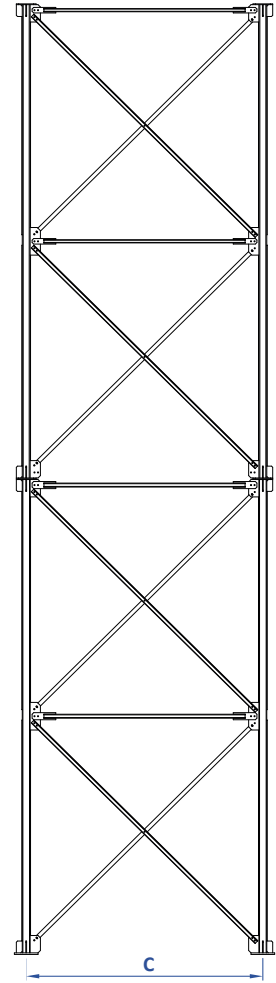
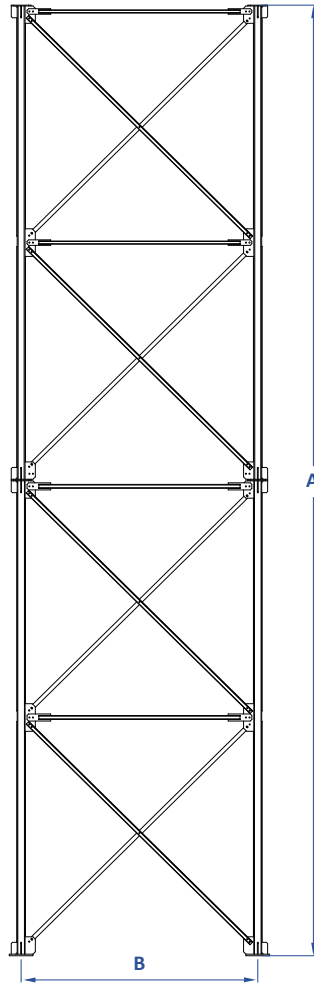
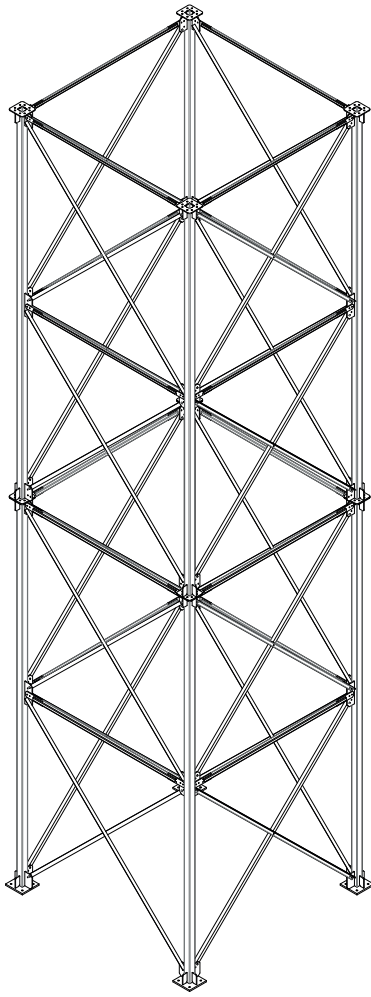
Roof



Service Platform



Catwalk Tower
Support



Technical Chart

Code	Description	Detail	A min-max	B	C
SC-EK2525	Elevator Tower 2525	AXBXC	600-4200	250	250
SC-EK3030	Elevator Tower 3030	AXBXC	600-4200	300	300
SC-EK3535	Elevator Tower 3535	AXBXC	600-4200	350	350
SC-EK4040	Elevator Tower 4040	AXBXC	600-4200	400	400
SC-EK5050	Elevator Tower 5050	AXBXC	600-4200	500	500
SC-EK6060	Elevator Tower 6060	AXBXC	600-4200	600	600

- Dimensions are given as cm.
- Mysilo; reserves the right to change the design and specifications of its products without notice.
- The data in the tables are approximate.